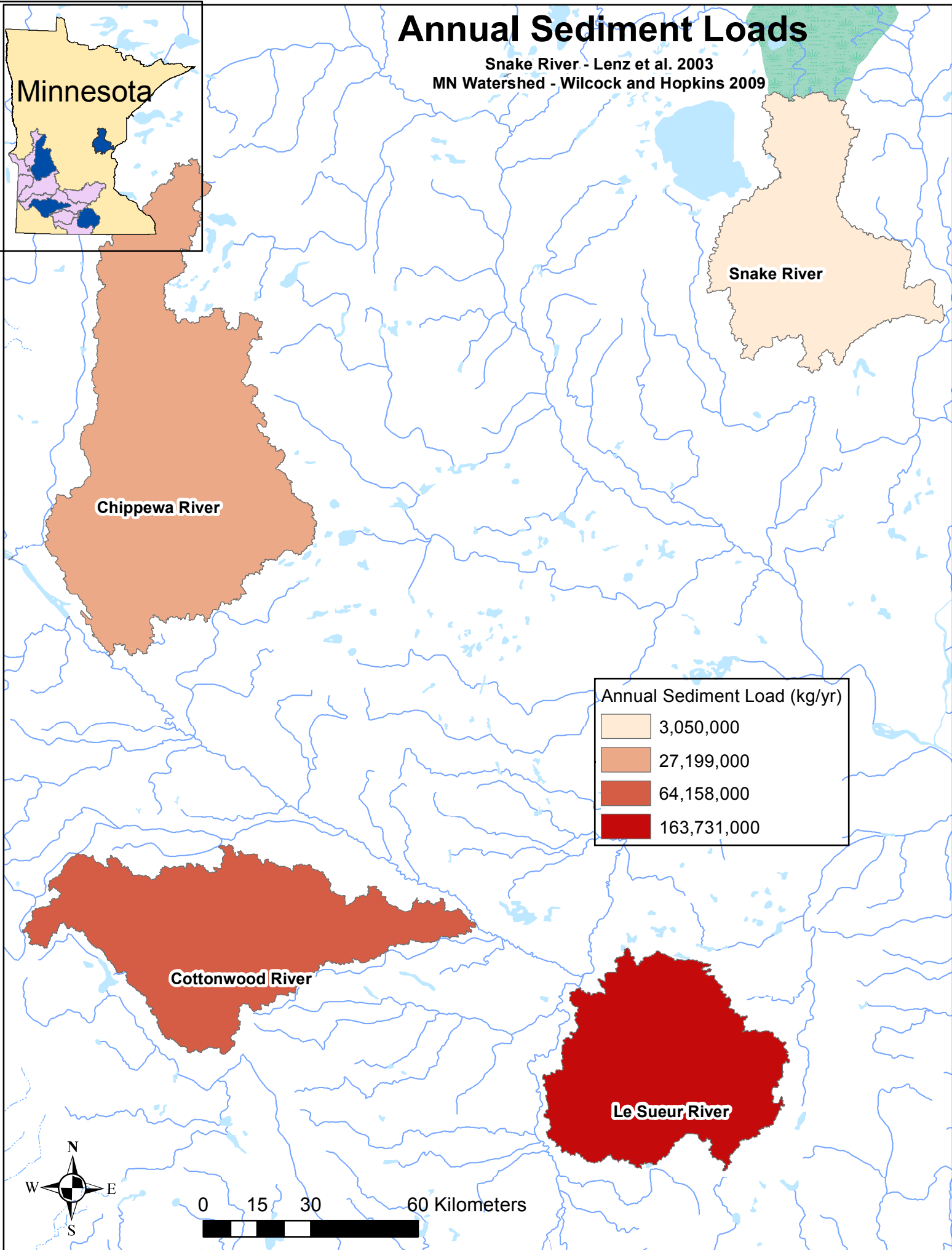


Annual Sediment Loads

Snake River - Lenz et al. 2003
MN Watershed - Wilcock and Hopkins 2009



Snake River

Chippewa River

Cottonwood River

Le Sueur River

Annual Sediment Load (kg/yr)

- 3,050,000
- 27,199,000
- 64,158,000
- 163,731,000



0 15 30 60 Kilometers

A horizontal scale bar with four segments, representing 0, 15, 30, and 60 kilometers.